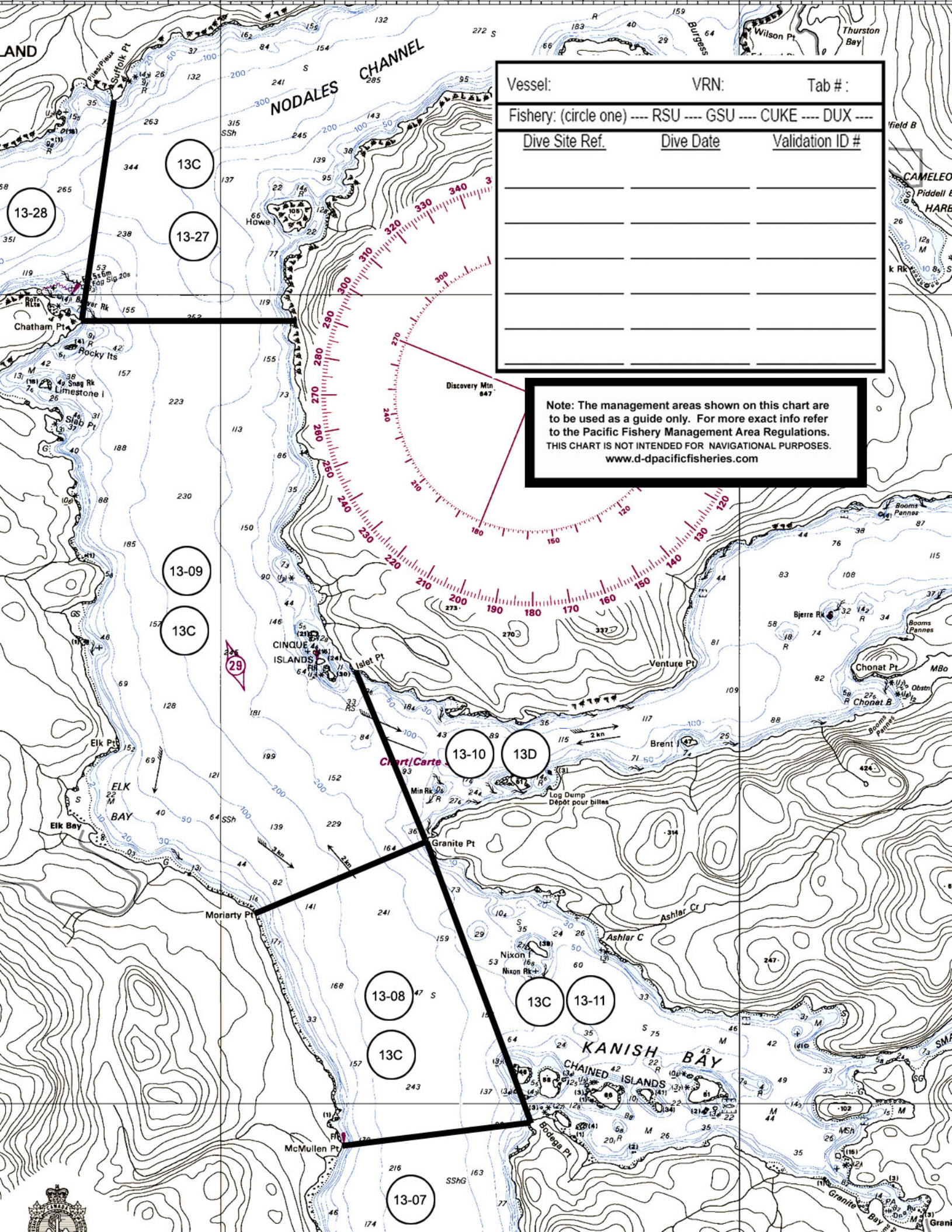


### Red Sea Urchin Fishery

Quota Area	Area Description
<p><b>13C Campbell River North</b></p>	<p>Portion of Subarea 13-6 north of a line drawn true west from North Bluff on Quadra Island across Seymour Narrows to a fishing boundary sign on Vancouver Island.            Subareas 13-7 to 13-9, 13-11, 13-27, 13-28. Note Area 13 Study Area closure.</p>



Vessel:	VRN:	Tab #:
Fishery: (circle one) --- RSU --- GSU --- CUKE --- DUX ---		
<u>Dive Site Ref.</u>	<u>Dive Date</u>	<u>Validation ID #</u>

Note: The management areas shown on this chart are to be used as a guide only. For more exact info refer to the Pacific Fishery Management Area Regulations. THIS CHART IS NOT INTENDED FOR NAVIGATIONAL PURPOSES. [www.d-pacificfisheries.com](http://www.d-pacificfisheries.com)

13-28

13C

13-27

13-09

13C

13-10

13D

13-08

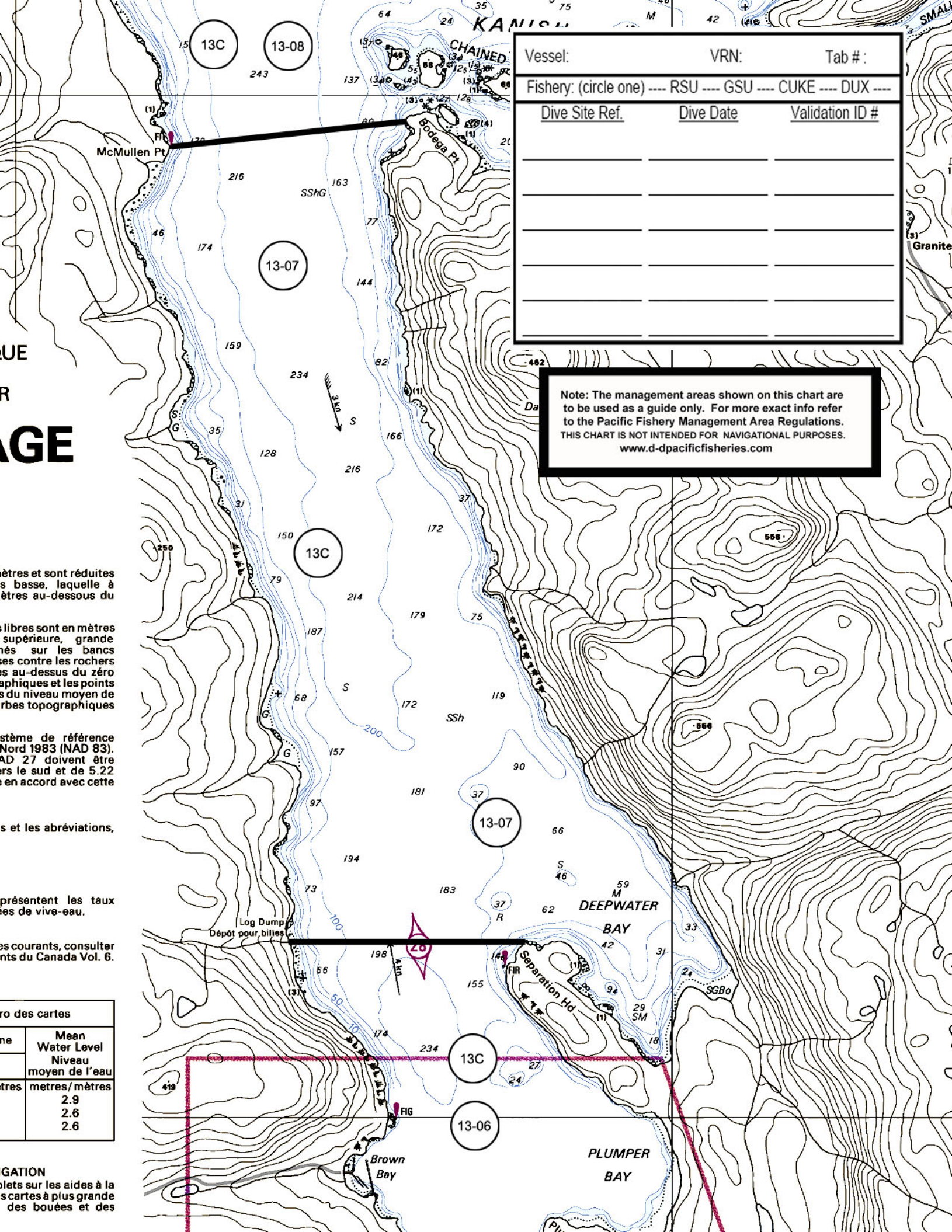
13C

13-11

13C

13-07





Vessel:	VRN:	Tab #:
Fishery: (circle one) ---- RSU ---- GSU ---- CUKE ---- DUX ----		
<u>Dive Site Ref.</u>	<u>Dive Date</u>	<u>Validation ID #</u>

Note: The management areas shown on this chart are to be used as a guide only. For more exact info refer to the Pacific Fishery Management Area Regulations. THIS CHART IS NOT INTENDED FOR NAVIGATIONAL PURPOSES. [www.d-dpacificfisheries.com](http://www.d-dpacificfisheries.com)

mètres et sont réduites  
s basse, laquelle à  
ètres au-dessous du

libres sont en mètres  
supérieure, grande  
nés sur les bancs  
es contre les rochers  
s au-dessus du zéro  
aphiques et les points  
s du niveau moyen de  
rbes topographiques

système de référence  
Nord 1983 (NAD 83).  
AD 27 doivent être  
ers le sud et de 5.22  
en accord avec cette

s et les abréviations.

présentent les taux  
es de vive-eau.

es courants, consulter  
nts du Canada Vol. 6.

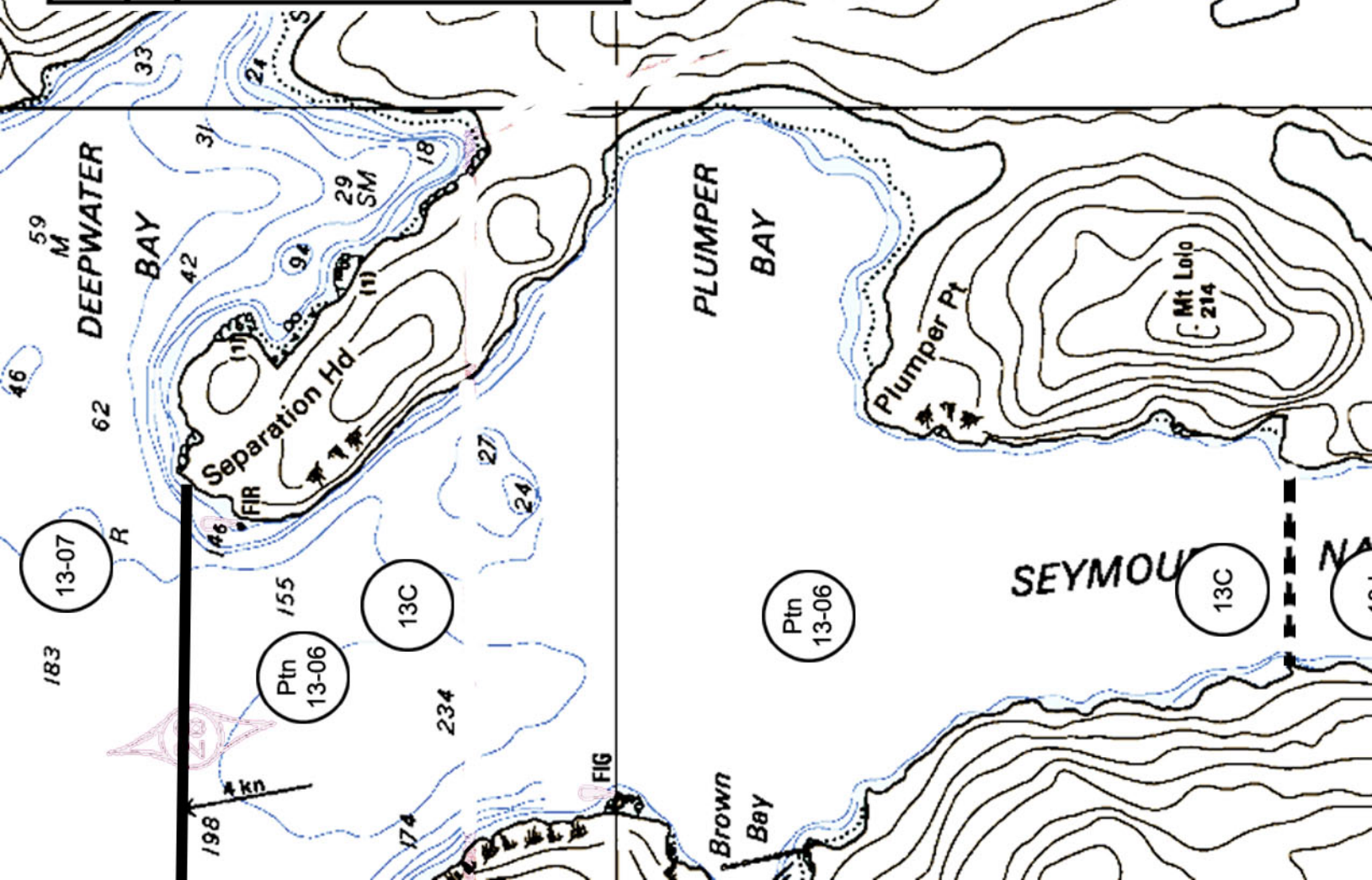
ro des cartes	
ne	Mean Water Level
	Niveau moyen de l'eau
ètres	metres/mètres
	2.9
	2.6
	2.6

GATION  
lets sur les aides à la  
s cartes à plus grande  
des bouées et des



Vessel:	VRN:	Tab #:
Fishery: (circle one) --- RSU --- GSU --- CUKE --- DUX ---		
Dive Site Ref.	Dive Date	Validation ID #

Note: The management areas shown on this chart are to be used as a guide only. For more exact info refer to the Pacific Fishery Management Area Regulations. THIS CHART IS NOT INTENDED FOR NAVIGATIONAL PURPOSES. [www.d-pacificfisheries.com](http://www.d-pacificfisheries.com)



...ter Level  
 ...etres above  
 ...lined figure  
 ...sist dry  
 ...hart data  
 ...ations are  
 ...he cont

Datum is  
 SATNAV  
 SF correct  
 datum  
 moved 0  
 westward

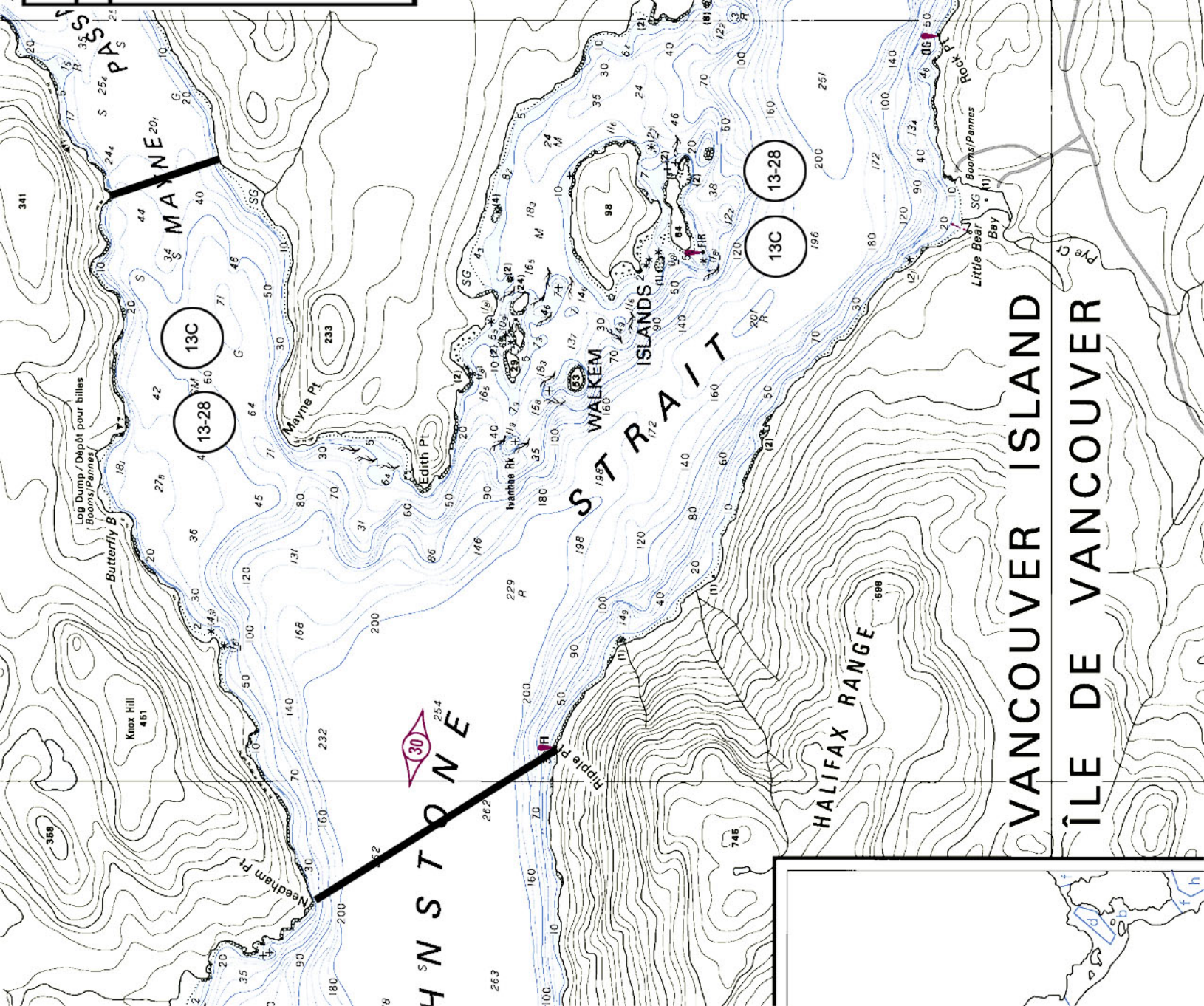
shown in  
 topography

1 No. 1.

maximum rate  
 Tables Vol. 6

Vessel:	VRN:	Tab #:
Fishery: (circle one) ----- RSU ----- GSU ----- CUKE ----- DUX -----	Dive Date	Validation ID #

**Note: The management areas shown on this chart are to be used as a guide only. For more exact info refer to the Pacific Fishery Management Area Regulations. THIS CHART IS NOT INTENDED FOR NAVIGATIONAL PURPOSES. www.d-pacificfisheries.com**



**VANCOUVER ISLAND**  
**ÎLE DE VANCOUVER**

**HALIFAX RANGE**

**STRAIT**

**HNS TOME**

13C  
13-28

13C  
13-28

13C  
13-28



aken fr  
onversio  
his char  
NAD 27  
nd 5.27

Vessel:	VRN:	Tab #:
Fishery: (circle one) --- RSU --- GSU --- CUKE --- DUX ---		
<u>Dive Site Ref.</u>	<u>Dive Date</u>	<u>Validation ID #</u>

Nord 1983 (NAD 83). Les  
PG , SATNAV ou Loran-C  
onnées après la correction  
rées sur cette carte sans  
géodésique. Les positions  
nt être corrigées de 0.67  
5.27 secondes vers l'ouest  
ette carte.

ydrographiques sont pré-  
ME DE CLASSIFICATION DES  
 provient des cartes du  
nce cartographique.

nnels et les abréviations,

représentent les taux  
maximums normaux aux marées de vive-eau.

raphic d  
ION DIA  
hic Syst

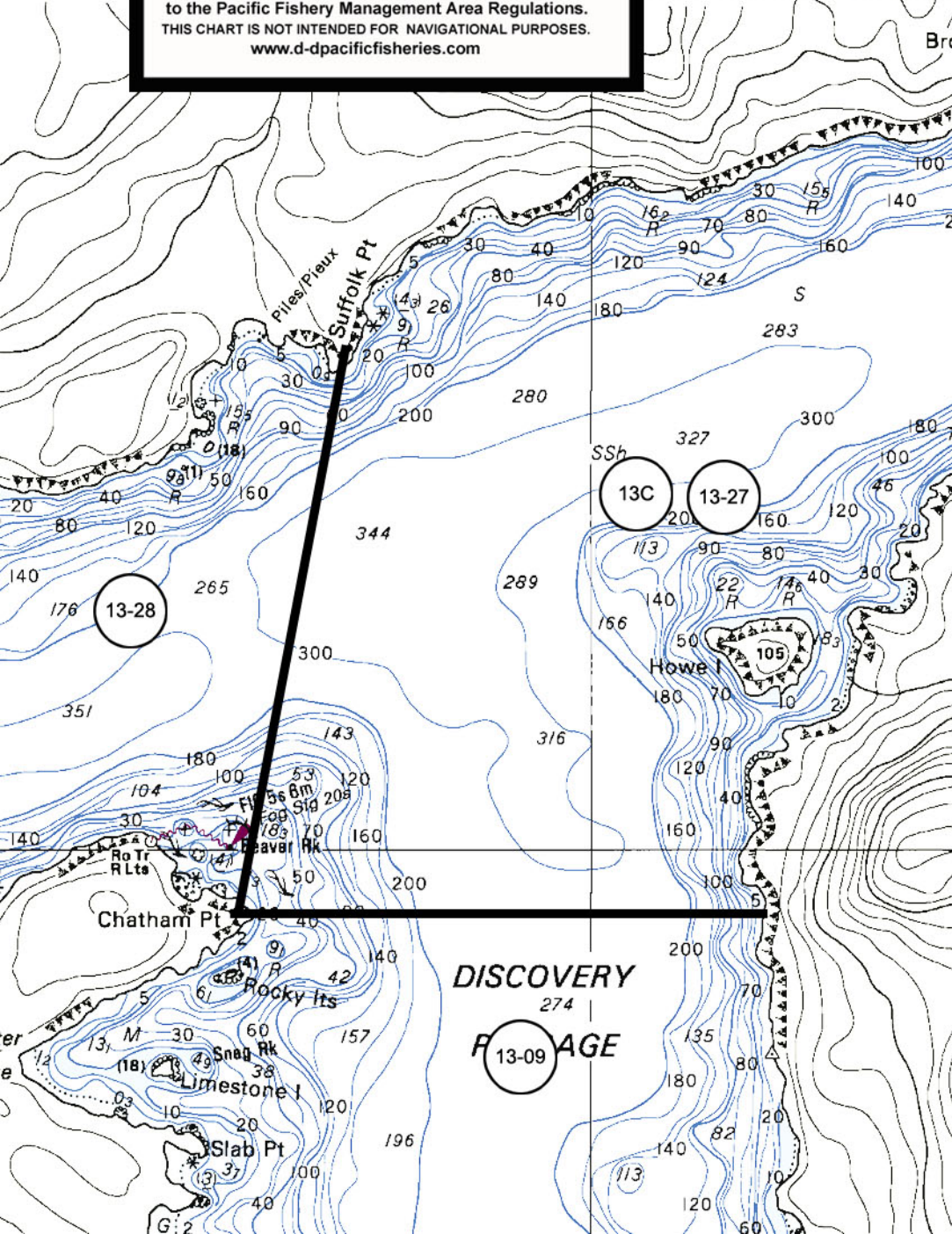
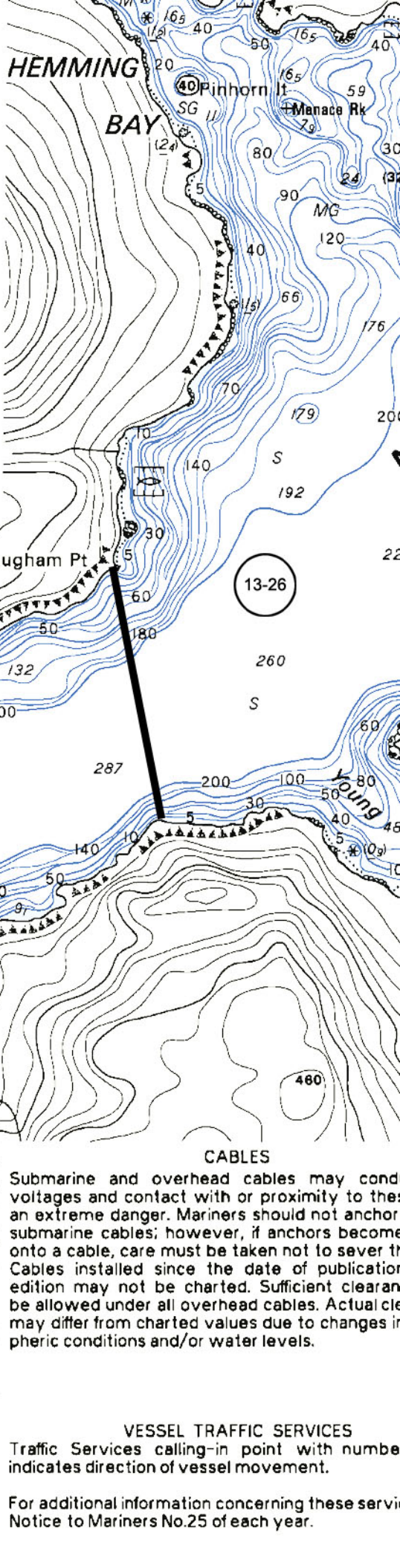
viations,

esent no

nd Current

Note: The management areas shown on this chart are to be used as a guide only. For more exact info refer to the Pacific Fishery Management Area Regulations. THIS CHART IS NOT INTENDED FOR NAVIGATIONAL PURPOSES. www.d-pacificfisheries.com

ts sur les courants, consulter  
et courants du Canada Vol. 6.



13-26

13C

13-27

13-28

DISCOVERY  
274

13-09  
AGE

CABLES

Submarine and overhead cables may conduct voltages and contact with or proximity to these cables is an extreme danger. Mariners should not anchor over submarine cables; however, if anchors become entangled on a cable, care must be taken not to sever the cable. Cables installed since the date of publication of this edition may not be charted. Sufficient clearance should be allowed under all overhead cables. Actual clearance may differ from charted values due to changes in magnetic conditions and/or water levels.

VESSEL TRAFFIC SERVICES

Traffic Services calling-in point with number indicates direction of vessel movement.

For additional information concerning these services, consult Notice to Mariners No.25 of each year.